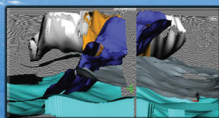
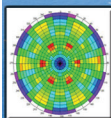


SEG 2010



SUMMER RESEARCH WORKSHOP

Subsalt Exploration and Development:

Four years later...
what's new in
acquisition, imaging
and interpretation?

26–29 July 2010
Lake Tahoe, CA

Organizing Committee

Bin Wang, General Chairman

SRW Lake Tahoe

Attn: Amy Watson

P.O. Box 702740

Tulsa, OK 74170

Phone: +1-918-497-5529

Fax: +1-918-497-5557

Email: awatson@seg.org

2010 SRW Lake Tahoe Information Sheet

This sheet provides all information related to registration and housing. Information related to the technical sessions will be provided at a later date.

REGISTRATION AND HOUSING

Registration Fee

The registration fee by 8 June is US\$535. The late registration fee beginning 9 June is US\$635.

Due to generous support from ION/GXT, Hess, and Total, student presenters will have their registration fee waived. Students not giving a presentation may attend with a reduced registration rate of US\$150.

Check-in and Registration

Meeting check-in will open at 3:30 p.m. on Monday, 26 July 2010 at the Resort at Squaw Creek. Check-in will reopen the morning of Tuesday, 27 July 30 minutes prior to the first session.

Cancellation Policy – Registration Fee

Written notice received by 5 p.m. (CST) 25 June entitles registrants to a full refund of the registration fee minus US\$50 processing charge. Written cancellation will be evaluated on the following scale:

26 June–7 July 2010, 25% Refund

After 7 July, No Refund

Substitutions are permissible with the approval of the workshop organizers. The SEG Business Office must be notified of substitutions as soon as they are known.

Housing and Reservations

Rooms have been reserved at the following rates at the Resort at Squaw Creek:

Deluxe Guestroom–Single/Double occupancy US\$179

Fireplace Suite–Single/Double occupancy US\$199

Deluxe Fireplace Suite–Single/Double occupancy US\$229

To make housing reservations, simply visit <https://resweb.passkey.com/go/SEG2010>. This link is also available on the SRW meeting Web site.

Note: There will be a daily resort fee of US\$16 per room, per night. The hotel cannot guarantee sleeping room availability or rates after 25 June 2010.

Parking

Self-parking is available on a complimentary basis and is located in the lower parking lot to the east of the resort entrance. Valet parking is US\$19 per day.

Transportation

The Resort at Squaw Creek is approximately one hour from the Reno/Tahoe International Airport. If you are not renting a vehicle, individual and group transportation reservations can be made to and from the airport by calling 1-866-909-RIDE.

MISCELLANEOUS

Meals

Guest meal tickets for the Monday evening Icebreaker may be purchased in advance by completing the information on our registration form. There will be no refund for guest meal tickets.

Attire

Business casual or casual attire is suggested for the workshop sessions. Business casual is suggested for the Icebreaker. We suggest you bring a jacket for the air-conditioned meeting rooms.

Portions of the
Workshop sponsored by:



<http://www.seg.org/meetings/srw2010>