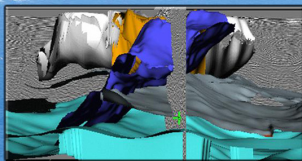
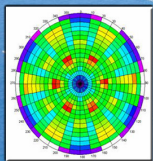


SEG 2010



Summer Research Workshop

26–29 July • Resort at Squaw Creek, Lake Tahoe, CA

Subsalt Exploration and Development:

Four years later...

what's new in acquisition, imaging and interpretation?

Call for Contributions

2010 Summer Research Workshop • Resort at Squaw Creek, Lake Tahoe, CA • 26–29 July 2010

Subsalt Exploration and Development:

Four years later... what's new in acquisition, imaging and interpretation?

Abstract submission deadline: 20 April 2010

Advance registration deadline: 8 June 2010



Society of Exploration Geophysicists
The international society of applied geophysics

A significant proportion of accessible hydrocarbon reserves today are thought to be in salt provinces where, historically, exploration and production has proved difficult. Five years ago, a workshop was held at the Colorado School of Mines to focus the R&D community on the problems of subsalt imaging where the salt came out a clear winner! A year later, in Snowbird's SRW, there were some hints of light: results from early wide-azimuth acquisitions seemed promising, RTM was being talked about, and a number of ideas for subsalt velocity analysis were proposed. Since then, propelled by a massive spike in the price of oil, the salt provinces of the Gulf of Mexico have been carpeted with WAZ (several times over in places) and RTM has become everybody's favorite imaging algorithm. However drilling subsalt remains a risky and costly activity, proprietary WAZ acquisition is expensive and likely to remain so, some aspects of processing have not kept pace with the advances in acquisition, and it seems that WAZ + RTM is not an imaging panacea, with some subsalt images that are still less than adequate for E&P purposes...

In this workshop we propose to review the advances of the last half-decade, and discuss the remaining problems and the techniques emerging to address these. Geoscience and Engineering professionals engaged in subsalt exploration and development are invited to come to Lake Tahoe in July 2010 to share their experiences, problems and solutions. In particular we encourage oral presentations on the following topics (in a subsalt context):

- Acquisition: WATS, nodes, VSP, simultaneous source shooting
- Processing – has this kept up with the advances in acquisition?
- Interpretation techniques and case histories
- Imaging techniques and methodologies
- Velocity estimation, anisotropy (TTI, VTI ...), MVA and full waveform inversion
- Integration of non-seismic data and other unconventional techniques
- Reservoir development and production

These themes will be launched by addresses from several keynote speakers, including:

- Guillaume Cambois, President of Marine, Asia-Pacific, PGS
- Zhiming Li, Sr. VP, Imaging Services, TGS
- Leonard Srnka, Chief Geoscientist, Upstream Research Company, ExxonMobil
- Scott Michell, R&D Manager, Subsalt & Complex Imaging, BP
- Andrew Hawthorn, Geomechanics Operations Manager, North America, Schlumberger
- Jefferson Dias, Interpretation Manager, Santos and Pelotas Basins, Petrobras

Meeting Schedule:

- Monday, 26 July – Registration and Ice Breaker
- Tuesday, 27 July through Thursday, 29 July – Two full day sessions Tuesday and Thursday with morning and afternoon sessions, and a half day session Wednesday morning. Wednesday afternoon will remain open for attendees to explore the area.

Format: Abstracts should include sufficient detail for the committee to judge the quality of the paper. Abstracts should be a minimum of 1 page text plus 1 figure. Abstracts should be on 8.5 x 11 inch paper, include both text and figures with a one-or two-line title in bold font, size 12-14 points. Authors should be listed in italic font, size 10-12 points and text in Roman font, size 10-12 points. All text must stay 1 inch clear of the margins of the page. Submissions should be in Adobe Acrobat.

Meeting Venue: Resort at Squaw Creek will serve as the meeting venue and will have sleeping rooms available during your stay.

Submission: We recommend submitting your abstract electronically. You can email it to awatson@seg.org in PDF format. The other method of submission is through the mail. Please submit contributions to the organizers: c/o SEG Summer Research Workshop, 8801 S. Yale, Ste. 500, Tulsa, OK 74137-3575.

Sponsorship: Sponsorship opportunities are available by contacting Amy Watson at awatson@seg.org or at <http://www.seg.org/meetings/srw2010>.

Acceptance: An oral presentation is not a requirement in order to be accepted for registration. If the number of applicants exceeds the capacity of the conference facilities, then preference will be given to presenters.

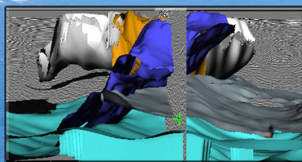
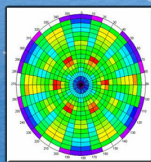
Student Registration: Students are encouraged to submit papers. Students chosen to present will be considered to receive a discounted registration rate. All registration rates will be published at the time acceptance letters are sent out.

Organizing Committee

Bin Wang, Chair (TGS); Dimitri Bevc (FusionGeo); Paul Williamson (Total); Graham Winbow (ExxonMobil); Ricardo Rosa (Petrobras); Biondo Biondi (Stanford U); Ian Jones (ION-GXT); Jacques Leveille

<http://seg.org/meetings/srw2010>

SEG 2010



Summer Research Workshop

26–29 July • Resort at Squaw Creek, Lake Tahoe, CA

Subsalt Exploration and Development:

Four years later...

what's new in acquisition, imaging and interpretation?

Call for Contributions

2010 Summer Research Workshop

Resort at Squaw Creek, Lake Tahoe, CA • 26–29 July 2010

Subsalt Exploration and Development:

Four years later... what's new in acquisition, imaging and interpretation?

Deadline: Tuesday, 20 April 2010



Society of Exploration Geophysicists
The international society of applied geophysics

Amy Watson, Meeting Planner
SEG Business Office
8801 S. Yale Ave., Ste. 500
Tulsa, OK 74137-3575
+1-918-497-5529
+1-918-497-5557 (Fax)
awatson@seg.org

PRINT IN BLACK INK OR TYPE

☐ Mr. ☐ Ms. ☐ Dr. Student: ☐ Yes ☐ No

Name _____

Company/Organization _____

Mailing Address _____

City _____ State _____

Postal Code _____ Country _____

Business Phone _____ Fax _____

E-mail _____

Select your preference: ☐ Oral presentation ☐ No presentation, discussion contribution only

If presenting, please complete the following information and submit abstract via email or mail.

Title _____

Signature _____

Note: The mechanical recording of any portion of the 2010 SEG SRW in any form (photographic, electronic, etc.) is strictly prohibited. Only registrants are permitted to attend Workshop sessions. Each participant agrees to the above regulations when application is accepted, as indicated by his or her signature on this form.